

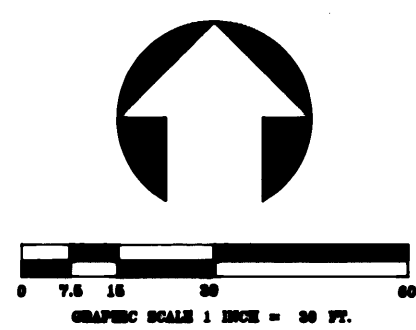
PLAT OF
PINE CASTLE
 A REPLAT of LOT 2, PEAK PLAT

AS RECORDED IN PLAT BOOK 13 PAGE 58
 PUBLIC RECORDS OF MARTIN COUNTY, FLORIDA
 A SUBDIVISION IN SECTION 3,
 TOWNSHIP 38 SOUTH, RANGE 41 EAST,
 CITY OF STUART • MARTIN COUNTY, FLORIDA

CLERK'S RECORDING CERTIFICATE
 I, MARSHA STILLER, CLERK OF THE CIRCUIT COURT OF MARTIN COUNTY, FLORIDA, HEREBY CERTIFY THAT THIS PLAT WAS FILED FOR RECORD IN PLAT BOOK 13, PAGE 100, MARTIN COUNTY, FLORIDA, PUBLIC RECORDS THIS 4th DAY OF October, 1994.
 MARSHA STILLER, CLERK OF THE CIRCUIT COURT
 MARTIN COUNTY, FLORIDA
 FILE NUMBER 1084780 BY Charlotte Brudley DEPUTY CLERK
 3-38-41-042-000-000.0
 SUBDIVISION PARCEL CONTROL NO.

Prepared By:
ASLAN, Inc.
 CONSULTANTS • PLANNERS • SURVEYORS
 LAND INFORMATION SERVICES
 2440 S.E. Federal Highway - Suite Z
 Stuart, FL 34904 (407) 298-4800 Fax 298-0180

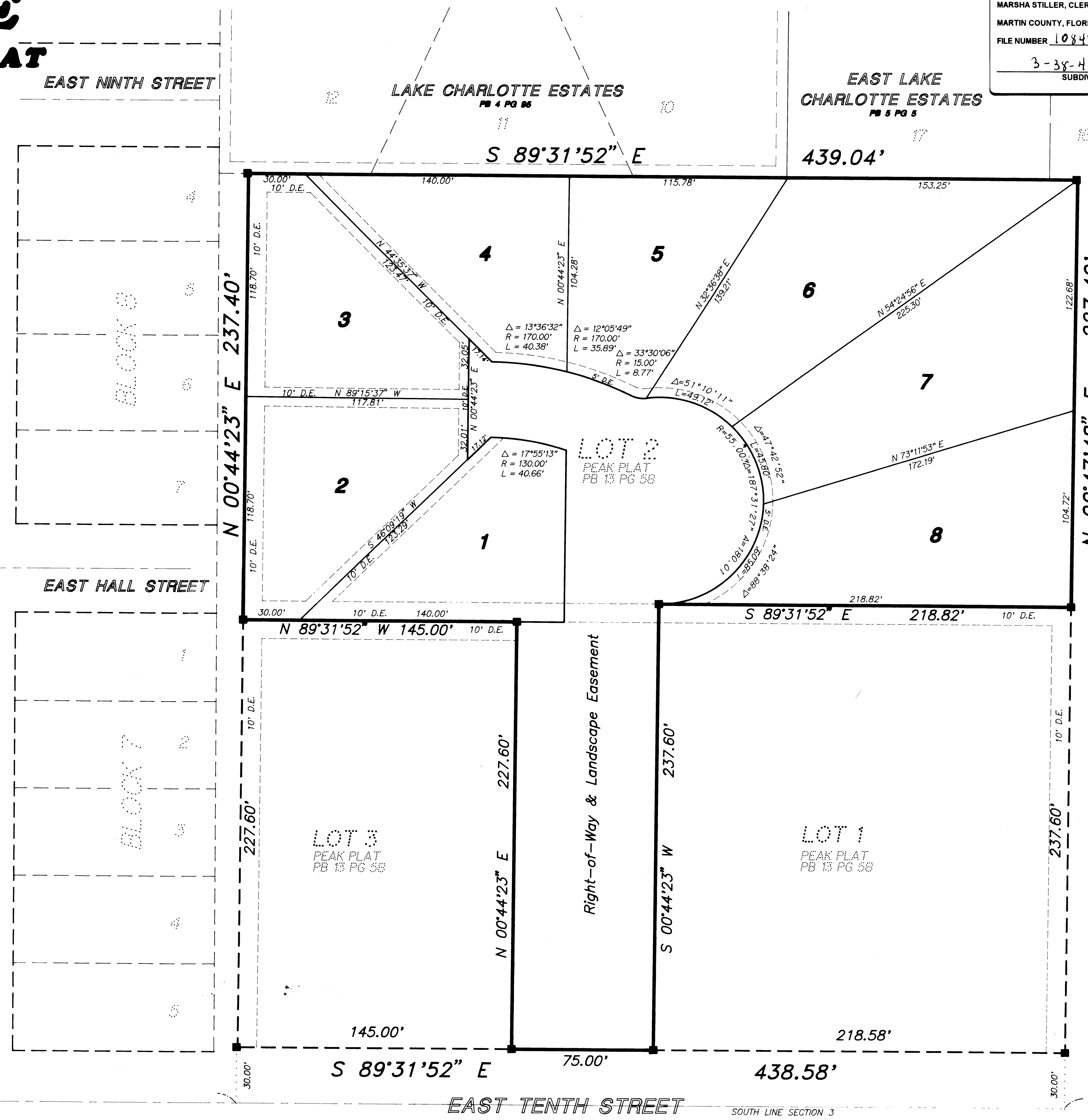
- NOTES:
- BEARINGS REFER TO S89°31'52"E AS REFERENCED TO THE SOUTH LINE OF SECTION 3, TOWNSHIP 38 SOUTH, RANGE 41 EAST MARTIN COUNTY, FL.
 - THERE MAY BE ADDITIONAL RESTRICTIONS THAT ARE NOT RECORDED ON THIS PLAT THAT MAY BE FOUND IN THE PUBLIC RECORDS OF THIS COUNTY.
 - = FND. P.R.M., A 4"x4" CONCRETE MONUMENT WITH DISK STAMPED P.L.S. 3336.



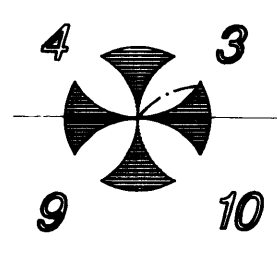
LEGEND

- CENTRAL ANGLE
- A - ARC LENGTH
- AC - ACRES
- BRG. - BEARING
- BM - BENCH MARK
- CA - CHORD
- C/L - CENTERLINE
- CM - CONCRETE MONUMENT
- CONC. - CONCRETE
- D.E. - DRAINAGE EASEMENT
- ELEV. - ELEVATION
- FD - FOUND
- FT. - FEET
- GOV'T - GOVERNMENT
- ME - EGRESS & EGRESS EASEMENT
- L - ARC LENGTH
- L.A.E. - LIMITED ACCESS EASEMENT
- M.E. - MAINTENANCE EASEMENT
- N.I.C. - NOT INCLUDED
- N.T.S. - NOT TO SCALE
- ORB - OFFICIAL RECORD BOOK
- PB - PLAT BOOK
- PC - POINT OF CURVATURE
- PCP - PERMANENT CONTROL POINT
- PG - PAGE
- PK - PARKER-KALON NAIL
- P.L.S. - PROFESSIONAL LAND SURVEYOR
- P.O.B. - POINT OF BEGINNING
- P.O.C. - POINT OF COMMENCEMENT
- PRM - PERMANENT REFERENCE MONUMENT
- PT - POINT OF TANGENCY
- R - RADIUS
- ROE - RANGE
- R/W - RIGHT-OF-WAY
- SECT. - SECTION
- S.D. - SUBDIVISION
- SF - SQUARE FEET
- T - TANGENT
- TWP. - TOWNSHIP
- TYP. - TYPICAL
- U.E. - UTILITY EASEMENT

LAKE CHARLOTTE SECTION ONE
 PG 1 PG 7



UNPLATTED



705.17' (M)

1521.46' (M)
 1520' (D)